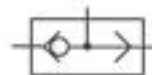




Basic Catalog Pneumatics

Shuttle valves

ND 2 - ND 5.



Connection port	Code no.
M 5	534 200 000 0
G 1/8	534 201 010 0
∅ 6x1	534 201 020 0
G 1/4	534 017 010 0

Check valves

Series 534.

Qn = 80-18200 NI/min.

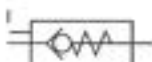


Connection port	Nom. flow at 6 bar NI/min.	Code no.
M 5	80	534 003 000 0
G 1/8	230	534 098 100 0
G 1/4	1050	534 098 110 0
G 3/8	1650	534 098 120 0
G 1/2	2200	534 098 130 0
G 3/4	6200	534 098 140 0
G 1	18 200	534 097 030 0

Check valve with override

ND 4 - 12.

Qn = 550-3000 NI/min.

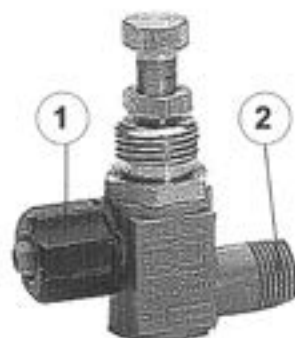
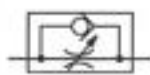


Connection port	Nom. flow at 6 bar NI/min.	Code no.
G 1/8	500	534 005 001 0
G 1/4	1000	534 005 100 0
G 1/4	1000	534 005 101 0
G 1/2	3000	534 005 300 0

Check-choke valve

ND 3 - 6.

Qn = 70-500 NI/min.



Flow NI/min.	Connection port 2	Connection port 1	Code no.
70-85	G 1/8	∅ 6x1	534 120 000 0
	G 1/4	∅ 6x1	534 120 010 0
	∅ 6x1	G 1/8	534 120 020 0
	∅ 6x1	∅ 6x1	534 120 060 0
380-500	∅ 8x1	∅ 8x1	534 121 000 0
	∅ 8x1	G 1/4	534 121 010 0
	G 1/4	∅ 8x1	534 121 030 0

Precision check-choke valve

M 5 - G 1/4, ND 2 - 7.

Qn = 125-715 NI/min.

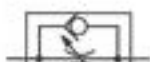


Connection port	Nom. flow at 6 bar in choked direction NI/min.	Nom. flow at 6 bar in backflow direction NI/min.	Code no.
M 5	125	160	534 105 000 0
G 1/8	375	380	534 106 100 0
G 1/4	575	715	534 108 100 0

Check-choke valve

M 5 - G 1/2, ND 2 - 7.

Qn = 60-1850 NI/min.



Connection port	Nom. flow at 6 bar in choked direction NI/min.	Nom. flow at 6 bar in backflow direction NI/min.	Code no.
M 5	130	140	534 112 000 0
G 1/8	100	160	534 112 110 0
G 1/4	500	750	534 112 210 0
G 3/8	1300	1350	534 112 310 0
G 1/2	1650	1850	534 112 410 0

Check-choke valve

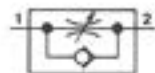
Series 254
with push-in fitting.
Qn = 95-320 NI/min.



Connection port	For tube dia [mm]	Code no.
M 5	4	254 010 405 0
M 5	6	254 010 605 0
G 1/8	4	254 010 418 0
	6	254 010 618 0
	8	254 010 818 0
G 1/4	6	254 010 614 0
	8	254 010 814 0
	10	254 011 014 0
G 3/8	8	254 010 838 0
	10	254 011 038 0
	12	254 011 238 0
G 1/2	10	254 011 012 0
	12	254 011 212 0

Check-choke valve

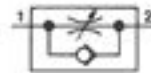
Series 254
with tube fitting.
Qn = 135-2900 NI/min.



Connection port	For tube dia [mm]	Code no.
G 1/8	4	254 000 418 0
	6	254 000 618 0
	8	254 000 818 0
G 1/4	6	254 000 614 0
	8	254 000 814 0
	10	254 001 014 0
G 3/8	10	254 001 038 0
	12	254 001 238 0
G 1/2	10	254 001 012 0
	12	254 001 212 0
	16	540 418 000 0

Check-choke valve*

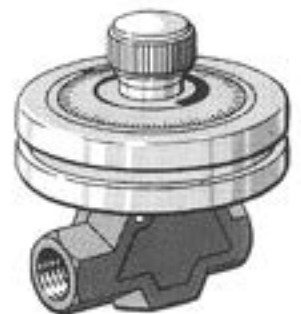
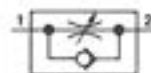
Series 344
Screwdriver / hexagonal wrench.
Qn = 280-16000 NI/min.



Connection port	Nom. flow at 6 bar in choked direction NI/min.	Nom. flow at 6 bar in backflow direction NI/min.	Code no.
G 1/8	161	280	344 110 000 0
G 1/4	541	1040	344 120 000 0
G 3/8	684	1960	344 125 000 0
G 1/2	1786	5250	344 130 000 0
G 3/4	4051	11340	344 140 000 0
G 1	8028	16000	344 150 000 0

Check-choke valve*

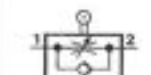
Series 344
with scale.
Qn = 280-1040 NI/min.



Connection port	Nom. flow at 6 bar in choked direction NI/min.	Nom. flow at 6 bar in backflow direction NI/min.	Code no.
G 1/8	161	280	344 210 000 0
G 1/4	541	1040	344 220 000 0

Check-choke valve*

Series 344
with roller lever.
Qn = 1040-16000 NI/min.



Connection port	Nom. flow at 6 bar in choked direction NI/min.	Nom. flow at 6 bar in backflow direction NI/min.	Code no.
G 1/4	541	1040	344 620 000 0
G 3/8	684	1950	344 625 000 0
G 1/2	1786	5250	344 630 000 0
G 3/4	4051	11340	344 640 000 0
G 1	8028	16000	344 650 000 0

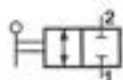
Other Valves

E/P converters



Stop cock valve

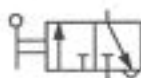
2/2 operated.
ND 7 - ND 23.



Connection port	Code no.
G 1/4	352 032 150 0
G 3/8	352 032 250 0
G 1/2	352 032 350 0
G 3/4	352 032 450 0
G 1	352 032 550 0
G 1 1/4	352 032 650 0
G 1 1/2	352 032 750 0
G 2	352 032 850 0

Stop cock valve

3/2 operated.
ND 7 - ND 23.



Connection port	Code no.
G 1/8	352 034 010 0
G 1/4	352 034 110 0
G 3/8	352 034 210 0
G 1/2	352 034 310 0
G 3/4	352 034 410 0
G 1	352 034 510 0

Electro-pneumatic pressure control valves*

Series 561 011, G 1/8.
analogue, pilot control.
Qn = 350 NI/min.



Pressure range	Input signal	Output signal	Code no.
0,1-6 bar	0-20 mA	0-20 mA	561 011 100 0
0,1-10 bar	0-20 mA	0-20 mA	561 011 102 0
0,1-6 bar	4-20 mA	4-20 mA	561 011 101 0
0,1-6 bar	0-10 V	-	561 011 110 0
0,1-10 bar	0-10 V	-	561 011 112 0
0,1-6 bar	0-10 V	0-20 mA	561 011 111 0

Electro-pneumatic pressure control valves*

Series 561 012, G 1/8.
analogue control,
proportional solenoid.
Qn = 350 NI/min.



Pressure range	Input signal	Output signal	Code no.
0,1 - 6 bar	0-20 mA	0-20 mA	561 012 050 0
	4-20 mA	4-20 mA	561 012 051 0
	0-10 V	-	561 012 060 0
	0-10 V	0-20 mA	561 012 062 0
	0-10 V	0-10 V	561 012 002 0

Accessories for E/P pressure control valves*

Digital control, 8 bits
for 561 011 and 561 012.



Type	Code no.
For E/P-pressure control valves	561 011 310 2

Electro-pneumatic pressure control valves*

Series 561 010, G1/4.
Analogue controlled.
Qn = 800 NI/min.
Adjustable pressure range.



Pressure range	Input signal	Output signal	Code no.
0,1-6 bar	0-20 mA	0-20 mA	561 010 205 0
	0-20 mA	4-20 mA	561 010 206 0
	0-10 V DC	-	561 010 207 0
	4-20 mA	4-20 mA	561 010 215 0
0,15-10 bar	4-20 mA	4-20 mA	561 010 217 0

Other Valves

Fine Setting Valves

Fine setting valve G 1/4, ND 3*

with plunger.
Qn = 200 NI/min.



Connection port	Regulating range [bar]	Operating force [N]	Code no.
G 1/4	0,1-1,1	65	361 070 700 0
	0,1-2,6	110	361 070 710 0
	0,1-3,6	140	361 070 720 0
	0,1-4,1	160	361 070 730 0
	0,1-4,6	180	361 070 740 0
	0,1-5,1	190	361 070 750 0
	0,1-7,1	250	361 070 760 0

Fine setting valve G 1/4, ND 3*

with rotary knob 24 mm dia.
Qn = 200 NI/min.



Connection port	Regulating range [bar]	Code no.
G 1/4	0,1-1,1	361 080 700 0
	0,1-2,6	361 080 710 0
	0,1-3,6	361 080 720 0
	0,1-4,1	361 080 730 0
	0,1-4,6	361 080 740 0
	0,1-5,1	361 080 750 0
	0,1-7,1	361 080 760 0

Fine setting valve G 1/4, ND 7*

with plunger.
Qn = 900 NI/min.



Connection port	Regulating range [bar]	Operating force [N]	Code no.
G 1/4	0,1-1,1	65	361 050 700 0
	0,1-2,6	110	361 050 710 0
	0,1-3,6	140	361 050 720 0
	0,1-4,1	160	361 050 730 0
	0,1-4,6	180	361 050 740 0
	0,1-5,1	190	361 050 750 0
	0,1-7,1	250	361 050 760 0
	0,1-10,1	350	361 050 770 0

Fine setting valve G 1/4, ND 7*

with rotary knob 24 mm dia.
or 63 mm dia.
Qn = 900 NI/min.



Connection port	Regulating range [bar]	Code no.
G 1/4	0,1-1,1	361 060 700 0
	0,1-2,6	361 060 710 0
	0,1-3,6	361 060 720 0
	0,1-4,1	361 060 730 0
	0,1-4,6	361 060 740 0
	0,1-5,1	361 060 750 0
	0,1-7,1	361 060 780 0
	0,1-10,1	361 060 770 0
	0,1-5,1	361 058 750 0
	0,1-7,1	361 058 760 0

Fine setting valve G 1/4, ND 7*

with rotary knob 24 mm dia. and
pilot air connection.
Qn = 900 NI/min.



Connection port	Regulating range [bar]	Code no.
G1/4	0,1-5,1	361 060 903 0

Fine setting valve G 1/4, ND 7*

with hand lever.
Qn = 900 NI/min.



Connection port	Regulating range [bar]	Code no.
G 1/4	0,1-1,1	361 062 800 0
	0,1-2,6	361 062 810 0
	0,1-3,6	361 062 820 0
	0,1-4,1	361 062 830 0
	0,1-4,6	361 062 840 0
	0,1-5,1	361 062 850 0

Other Valves

Logic Valves

Pneumatically operated valve*

AND element.
Qn = 120 NI/min.



Code no.

551 014 000 0

Pneumatically operated shuttle valve*

OR element.
Qn = 120 NI/min.

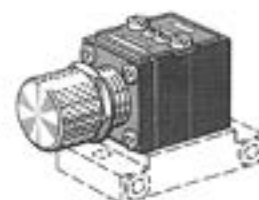
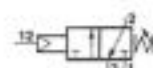


Code no.

551 015 000 0

Pressure switch*

adjustable, 0,6-10 bar.
Qn = 30 NI/min.

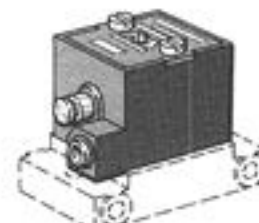


Code no.

551 016 000 0

Pneumatically operated 3/2 valve*

MEMORY element.
Qn = 120 NI/min.

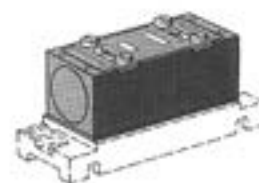


Code no.

551 020 000 0

Counter*

Qn = 120 NI/min.

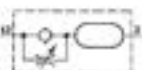


Code no.

551 024 000 0

Timer*

delayed signal.

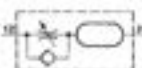


Code no.

551 025 000 0

Timer*

delayed de-energization.

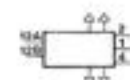


Code no.

551 026 000 0

Two-handed safety control*

Qn = 120 NI/min.



Code no.

551 060 000 0

Other Valves

Accessories



Sealing*

for combination of logic elements with time elements or air reservoir.



Code no.

551 425 000 0

Single module plate*

for thread G 1/8.



Code no.

551 541 000 0

Double module plate*

for thread G 1/8.



Code no.

551 441 000 0

Single module plate*

for quick connector 4 mm dia.



Code no.

551 561 000 0

Double module plate*

for quick connector 4 mm dia.



Code no.

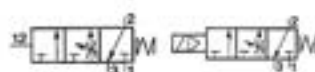
551 461 000 0

Pressurizing module

Series 583.

pressure and solenoid operated.

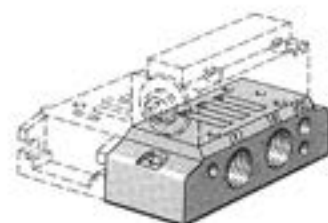
Q_n = 3300 NI/min.



Connection port	Voltage	For series	Code no.
	Pressure operated	581, 586	583 213 100 0
	24 V/DC	581	583 211 110 0
	24 V/DC/2 W	590	583 590 010 0
	24 V/AC	581	583 211 120 0
	110 V/AC	581	583 211 130 0
G 1/2	230 V/AC	581	583 211 140 0
	24 V/DC/2 W	581	583 215 110 0
	24 V/DC/5W	586	583 211 510 0
	24 V/AC	586	583 211 520 0
	110 V/AC	586	583 211 530 0
	230 V/AC	586	583 211 540 0
	24 V/DC/2 W	586	583 215 510 0

Manifold bases

for Series 583.



Mounting option	Port position	Code no.
ISO 1 VDMA	Side bottom side	583 145 000 0
586-G 1/8	Side bottom side	583 164 000 0
586, G 1/4	Side bottom side	583 264 000 0
Single mounting	Side bottom side	583 471 000 0
590	Bottom side bottom	583 590 400 0

Mounting option	Port position	Code no.
581- ISO 1, G 1/8	Side bottom side	583 172 000 0
581- ISO 1, G 1/8	Bottom side bottom	583 172 500 0
581- ISO 1 and 2, G 1/4	Side bottom side	583 272 000 0
581-1 and 2, G 1/4	Bottom side bottom	583 272 500 0

Electrical connectors

for Series 583.

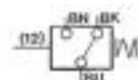
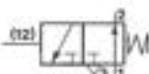


Safety standard	Voltage Type of current	Cable gland	Function	Code no.
IP 65	24 V	AC/DC	LED	894 101 612 2
	250 V	AC/DC	-	894 100 470 2
	250 V	AC/DC	-	440 121 000 0
	48 V	AC/DC	LED	440 201 039 0
	110 V	AC/DC	LED	440 201 032 0
	230 V	AC/DC	LED	894 101 613 2
	24 V	AC/DC	LED and cable 2 m	440 721 233 0
	230 V	AC/DC	LED and cable 2 m	440 721 231 0

Function fittings

Series 545.

Sensor.



Function	Signal	Code no.
Pneumatic	NO	545 011 040 0
Electrical	Alternating	545 012 000 0
Electronic for 12-24 V DC	Breaking	545 013 000 0

Function fittings

Series 545.

Banjo connection.



Connection port	Code no.
G 1/8	545 110 000 0
G 1/4	545 210 000 0
G 3/8	545 310 000 0
G 1/2	545 410 000 0

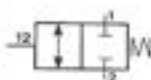
Function fittings

Series 545.

Blocking valves

threaded connection.

Q_n = 260-1390 NI/min.



Control signal connection	External thread	Internal thread	Code no.
M 5	G 1/4	G 1/4	545 221 920 0
	G 3/8	G 3/8	545 321 930 0
	G 1/2	G 1/2	545 421 940 0

Function fittings

Series 545.

Quick exhaust valves

quick connection.

Q_n = 840-1455 NI/min.

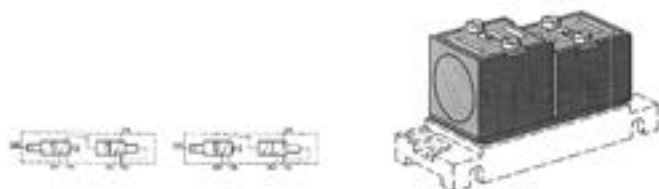


Control signal connection	External thread	Push-in Fittings for tubes	Code no.
∅ 4 mm	G 1/8	∅ 6 mm	545 131 080 0
∅ 4 mm	G 1/4	∅ 8 mm	545 231 080 0

Other Valves

Amplifier*

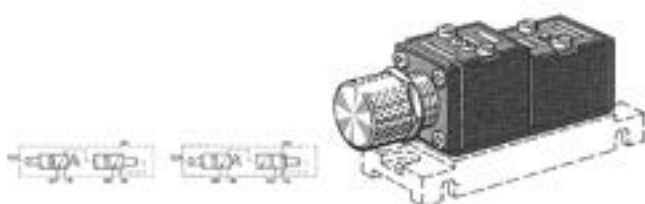
with YES- or NO-element
 for greater flow.



Version	Code no.
NC	551 012 010 0
NO	551 012 110 0

Pressure switch*

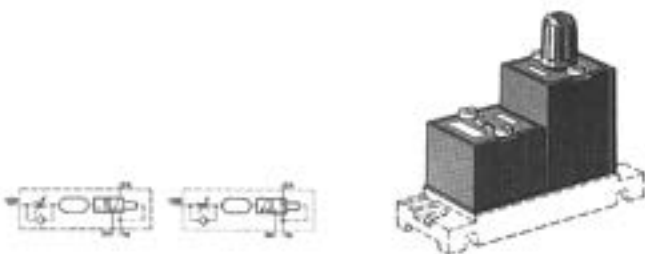
with YES- or NO-element
 for greater flow.



Version	Code no.
NC	551 016 010 0
NO	551 016 110 0

Timer*

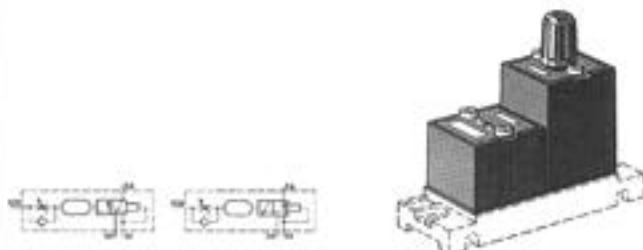
delayed signal.



Version	Code no.
NC	551 025 010 0
NO	551 025 110 0

Timer*

delayed de-energization.



Version	Code no.
NC	551 026 010 0
NO	551 026 110 0

Memory pressure controlled 5/2-valve*

Bistable function.
 Position indication button.
 Manual override.



Connection port	Code no.
G 1/8	551 220 000 0
∅ 4mm	551 220 500 0

Pressure controlled 5/2-valve*

Unistable, spring return.
 Position indication button/manual override.



Connection port	Code no.
G 1/8	551 221 000 0
∅ 4 mm	551 221 500 0

Other Valves

Logic Valves

Connection port	Regulating range [bar]	Code no.
G 1/4	0,1-7,1	361 062 860 0
	0,1-10,1	361 062 870 0
	0,1-1,1	361 062 803 0
	0,1-2,6	361 062 813 0
	0,1-3,6	361 062 823 0
	0,1-4,1	361 062 833 0
	0,1-4,6	361 062 843 0
	0,1-5,1	361 062 853 0
	0,1-7,1	361 062 863 0

Fine setting valve G 1/4, ND 7*

Pedal operated, normally closed.
 Qn = 900 NI/min.



Connection port	Regulating range [bar]	Operating force [N]	Code no.
G 1/4	0,1-2,6	67	361 064 710 0
	0,1-4,6	77	361 064 740 0
	0,1-5,1	80	361 064 750 0
	0,1-7,1	90	361 064 760 0

Pneumatically operated relay valves*

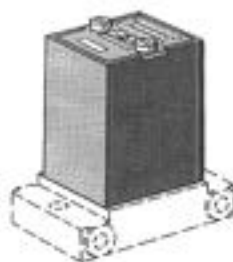
G 1/4, ND 7.

Suitable as a power valve with low hysteresis.
 Qn = 1050 NI/min.
 Quoted on request.



Air reservoir*

with indicator pin.

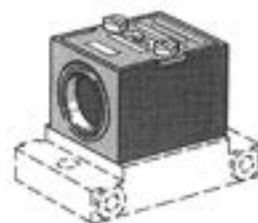


Code no.

551 003 000 0

Pneumatic operated valve*

YES element with automatic return.
 Qn = 120 NI/min.

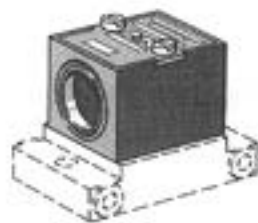


Code no.

551 010 000 0

Pneumatically operated valve*

NO element.
 Qn = 120 NI/min.

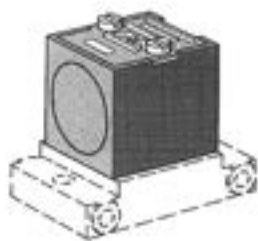


Code no.

551 110 000 0

Low pressure operated 3/2-valve*

Operating pressure range 10 mbar-0,5 bar.
 Qn = 2 NI/min

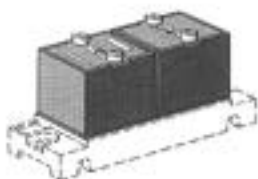


Code no.

551 012 000 0

Signal breaker*

for resting signal.
 Qn = 120 NI/min.



Code no.

551 013 000 0

Other Valves

E/P converters



Electro-pneumatic pressure control valves*

Series 561 010, G 1/4.
Field bus.
Qn = 800 NI/min.



Pressure range	Input signal	Code no.
0-6 bar	Interbus-S	561 010 551 0
0-6 bar	Interbus-S	561 010 552 0

Electro-pneumatic regulating valves*

Series 561 022.
Analogue control
Proportional magnet.
Qn = 2600 NI/min.
Accuracy = 0,01 bar.



Pressure range	Input signal	Output signal	Code no.
0-10 bar	0-20 mA	0-20 mA	561 022 450 0
	4-20 mA	4-20 mA	561 022 451 0
	0-10 V	-	561 022 452 0
	0-10 V	0-10 V	561 022 453 0

Single base plates*

for Series 561 02.



Type	Code no.
ND 7	561 021 105 2
ND 12	561 022 101 2

Manifold base plates*

for Series 561 02.



Type	Code no.
ND 7	898 504 991 2
ND 12	898 504 993 2

Electro-pneumatic pressure control valve

Series 561 021
proportional solenoid.
Qn = 1300 NI/min.



Version	Type	Code no.
0-10 bar	0-20 mA	561 021 450 0
	4-20 mA	561 021 451 0
	0-10 V	561 021 452 0
	0-10 V	561 021 453 0
Electropneumatic pressure control valve	Interbus-S	561 021 920 0
Dataplug	Interbus-S	561 021 528 2

Electro-pneumatic pressure control valve

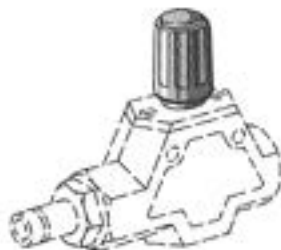
Series 561 010.
Qn = 800 NI/min.



Version	Type	Code no.
Electropneumatic pressure control valve	Interbus-S	561 010 552 0

Knob*

for Series 344 and 345.



Dim.	Code no.
G 1/8, G 1/4	344 810 000 0
G 3/8	344 825 000 0

Throttle valves*

Series 345.

Q_n = 160-2330 NI/min.



Connection port	Nom. flow at 6 bar NI/min.	Code no.
G 1/8	160	345 110 000 0
G 1/4	590	345 120 000 0
G 3/8	1080	345 125 000 0
G 1/2	2330	345 130 000 0

Check valve with silencer

Q_n = 0-4750 NI/min.

ND 4 - ND 12.



Connection port	Nom. flow at 6 bar NI/min.	Code no.
G 1/8	0-800	334 105 110 0
G 1/4	0-1660	334 105 111 0
G 3/8	0-3240	334 105 112 0
G 1/2	0-4750	334 105 113 0

Quick exhaust valves

Series 573.

Q_n = 220-15970 NI/min.



Connection port	Code no.
M 5	573 504 090 0
G 1/8	573 504 000 0
G 1/4	573 504 010 0
G 3/8	573 504 020 0
G 1/2	573 504 030 0
G 3/4	573 504 040 0
G 1	573 503 001 0

3/2-way manual spool valves

G 1/8-G 1/2.



Connection port	Code no.
G 1/8	552 005 010 0
Angled mounting	552 005 050 4
G 1/4	552 006 010 0
Angled mounting	552 003 100 4
G 1/2	552 007 010 0
Angled mounting	552 001 100 4