

IMCOS Marine CCTV System



Crouse-Hinds
by **EATON**



The safety you rely on.

Delivering world-class reliability and safety in high consequence harsh and hazardous environments

Only Eaton's Crouse-Hinds Business can deliver...

- Protection and safety of people and assets around the world with unsurpassed reliability and quality in every product we offer
- Industry leading innovation and product efficiency
- Product solutions designed and certified for global specifications
- Best-in-class, global sales, and customer service teams that provide local support

The Eaton advantage.



Crouse-Hinds remains the brand that stands for safety in the harshest of environments when power management is most critical. While it all began with the Condulet®, the Crouse-Hinds brand has grown into the premier name for a comprehensive portfolio of solutions for high-consequence harsh and hazardous environments.

And now, the next phase in the evolution of the brand you trust: Crouse-Hinds joins the leading Eaton portfolio of reliable, efficient and safe electrical power management solutions.

**More protection. More technology.
Expect more.**

Crouse-Hinds
by **EAT•N**

IMCOS Marine CCTV System

System Overview

IMCOS Marine CCTV system facilitates centralized monitoring from one or several control stations installed locally or remotely, providing a complete view of all areas and processes on ships and offshore installations.

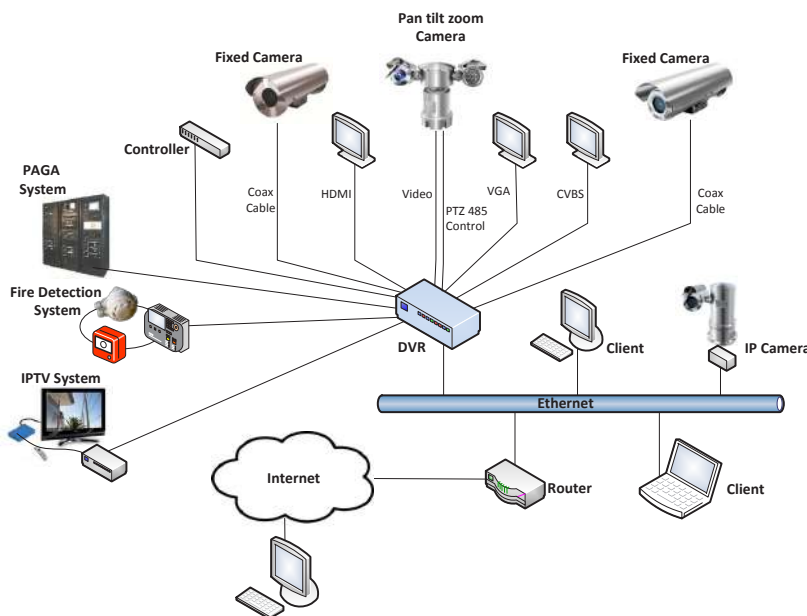
IMCOS Marine CCTV is a comprehensive solution, providing a full range of surveillance systems, including fully digital, hybrid, and traditional analogue CCTV products.

It can be supplied as a stand-alone system or as part of the IMCOS integrated communication solution. The IMCOS CCTV equipment is developed specifically for the Marine Market, using high performance equipment, built to resist the most corrosive environment. The IMCOS Marine CCTV is ideal for surveillance of critical areas such as engine rooms, cargo handling and mooring, pump and compressor rooms.

The IMCOS Marine CCTV System provides a complete range of camera stations and monitors for safe and hazardous areas, certified to both the European standard ATEX directive 94/9/EC and IEC Ex.

All system components, including housings and ancillary equipment integrated in the IMCOS CCTV solution, are selected to meet the given environmental and operational conditions.

The comprehensive CCTV package, follows the customer in each phase of the project: from the initial design, to installation & commissioning. Customized solutions are designed for retrofit projects, in order to reduce installation costs to the minimum.



Integrated System Benefits

- Broadcast camera signal through the IPTV Network
- Use of PC as additional surveillance stations.
- ISPS code.

Features

- Use of IP and analog cameras together
- 1/4/9/16 screen live view
- Live view group switch, manual switch and automatic cycle
- Multi-level user management, with individual DVR access rights
- Multiple recording types, including manual, continuous, alarm, motion, motion/alarm and motion & alarm recording, etc.
- Infrared/Day & Night cameras.
- Supports smart search function during playback
- Remote configuration and import and export of DVR settings.
- Remote acquisition of device status, system log and alarm status.
- 10/100/1000M adaptive network interfaces.
- Remote PTZ control.
- Voice talk and broadcast.
- Built-in web server and web client for managing the cameras.
- Supports network hard drives.
- SW client compatible with Windows XP, 7, 8, 32 and 64 bit.

The Camera Station Range

MCS1W



APPLICATION

This pan tilt zoom camera station has been designed specifically for hazardous areas requiring ATEX or IECEx certification. It is suitable for use across a wide range of applications, with the option of 304 stainless steel or 316L stainless steel.

The continuous 360° pan rotation and tilt from -90° to +90° gives an unrestricted view of the surround-

ing area. The optional light source further enhances the imaging in either the visible or infrared ranges.

With Pelco D/P protocol as standard, a variety of mounting brackets and wiper/washer tank options the MCS1W has the operational capability for most demanding CCTV applications.

FEATURES & CERTIFICATION

- ATEX & IECEx Certified
- Ex II 2GD
- Exd IIC T6 Gb
- Ext IIIC T80°C Db
- IP66 & IP68
- -40°C to 60°C
- 316L or 304 Stainless Steel
- 360° continuous pan rotation
- +90° to -90° tilt rotation
- Multiple scanning mode
- Advanced OSD menu
- Multiple protocols supported
- 128 positional presets
- Automatic heater and demister

MCS2



APPLICATION

This pan tilt zoom pendant camera station has been designed specifically for hazardous areas requiring ATEX or IECEx certification. It is suitable for use across a wide range of applications, with the option of 304 stainless steel or 316L stainless steel.

The continuous 360° pan rotation and 120° tilt gives an unrestricted view of the surrounding area. The pendant

design combines the features of a dome camera with a traditional PTZ providing scope for wider operational functions.

With Pelco D/P protocol as standard, a variety of mounting brackets, the MCS2 has the operational capability for most demanding CCTV applications.

FEATURES & CERTIFICATION

- Certified to ATEX & IECEx standards
- Ex II 2GD
- Exd IIC T6 Gb
- Ext IIIC T80°C Db
- IP67
- -15°C to 60°C
- 316L or 304 Stainless Steel
- 360° continuous pan rotation
- 120° tilt rotation
- Multiple scanning mode
- Advanced OSD menu
- Ceiling mounted
- Multiple protocols supported
- Auto image reverse

MCS3W



APPLICATION

This weatherproof pan tilt zoom camera station has been designed specifically for use in harsh and demanding environmental conditions. It is suitable for use across a wide range of applications, with the option of 304 or 316L stainless steel.

The continuous 360° pan rotation and tilt from -90° to +90° gives an unrestricted view of the surround-

ing area.

With Pelco D/P protocol as standard, a variety of mounting brackets and wiper/washer tank options, the MCS3 has the operational capability for most demanding CCTV applications.

FEATURES & CERTIFICATION

- IP68
- -40°C to 60°C
- 316L or 304 Stainless Steel
- 360° continuous pan rotation
- +90° to -90° tilt rotation
- Multiple scanning mode
- Advanced OSD menu
- Multiple protocols supported
- Automatic heater

MCS4



APPLICATION

This weatherproof pan, tilt and zoom dome camera station has been designed specifically for use in harsh and demanding environmental conditions. It is suitable for use across a wide range of applications, with the option of 304 or 316L stainless steel.

The continuous 360° pan rotation and tilt from -90° to +90° gives an unrestricted view of the surrounding area.

The dome design allows the camera to move efficiently in all directions

With a built in automatic heater, Pelco D/P protocol and a mounting bracket as standard, the MCS4 has the operational capability for most demanding CCTV applications.

FEATURES & CERTIFICATION

- IP68
- -40°C to 60°C
- 316L or 304 Stainless Steel
- 360° continuous pan rotation
- 0° to +90° unobstructed tilt rotation
- Multiple language support
- 3 different mounting options
- Image freeze available
- Function memory after power off
- Ten different alarm functions
- Automatic heater

MCS7



APPLICATION

This fixed camera station has been designed specifically for hazardous areas requiring ATEX or IECEx certification. It is suitable for use across a wide range of applications; with the options of 304 or 316L stainless steel.

With vari-focal lens as standard, a variety of mounting brackets and wiper/washer tank options, the MCS7

has the operational capability for most demanding CCTV applications.

FEATURES & CERTIFICATION

- ATEX & IECEx Certified
- Ex II 2GD
- Exd IIC T6 Gb
- Ext IIIC T80°C Db
- IP66
- -40°C to 60°C
- 316L or 304 Stainless Steel
- Varifocal zoom
- 120° tilt rotation
- 2x digital zoom
- Automatic heater

MCS8



APPLICATION

This Fixed Weatherproof Camera Station has been designed specifically for use within harsh & demanding environmental conditions. It is suitable for use across a wide range of applications; with the option of 304 Stainless Steel (electro-polished or painted) or 316L stainless steel.

With varifocal lens as standard, a variety of mounting brackets and

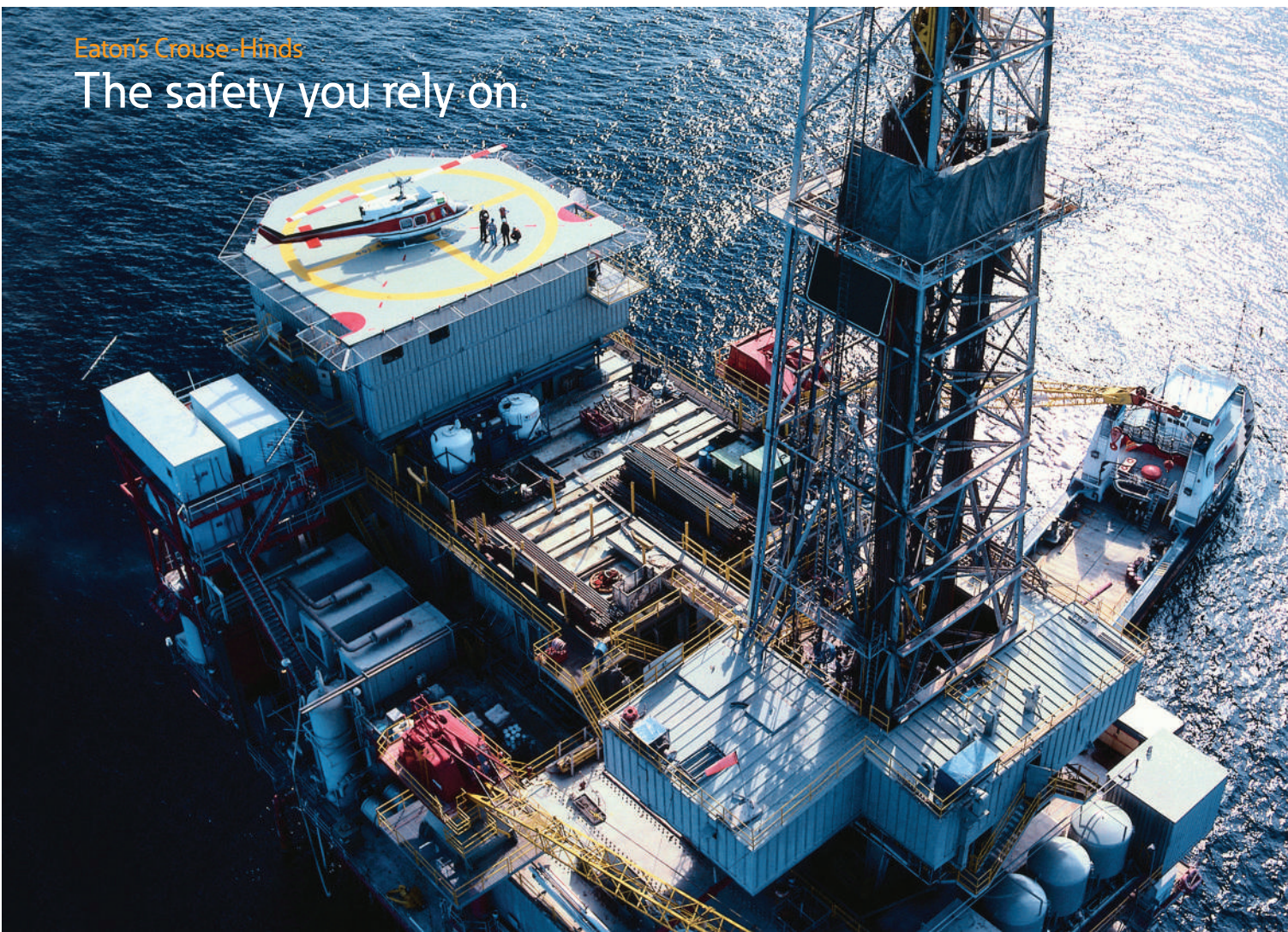
wiper/washer tank options the MCS8 has the operational capability for most demanding CCTV applications.

FEATURES & CERTIFICATION

- IP66
- -40°C to 60°C
- 316L or 304 Stainless Steel
- Varifocal zoom
- 2x digital zoom
- Automatic Heater

Eaton's Crouse-Hinds

The safety you rely on.



Hazardous Area Communications

MEDC

Since 1975, the Oil and Gas industry has relied on MEDC's highly respected Signalling and Alarms.

Designed for potentially explosive atmospheres and harsh industrial and marine environments, MEDC offers a comprehensive range of innovative notification solutions.

HERNIS

HERNIS is a world leading brand for high quality, durable and low maintenance Closed Circuit Television Systems. Characterized by low installation and maintenance costs and unrivalled durability, the systems are tailor made for hazardous and corrosive environments providing safety to both people and equipment.

GITIESSE

Gitiesse is the creator of IMCOS™, Integrated Multimedia Communication System. Each system is tailor made for your requirements. Gitiesse is a global brand in the Marine and Oil and Gas industries offering integrated solutions for internal communications and the distribution of alarms and signals.

FHF

Since 1897 engineers, end users and employees in a wide range of industries rely on the trend-setting products from FHF. Decades of experience in the fields of industrial communication and signaling backed up with the continuous drive for improvement and innovation, lead to products which are considered as class leading worldwide.

For more information please visit: www.cooperhac.com

Crouse-Hinds

by **EATON**



Eaton's Crouse-Hinds

The safety you rely on.

See the complete offering of Hazardous, Industrial and Commercial Products at www.crouse-hinds.com.

For more information:

If further assistance is required, please contact an authorized Eaton Distributor, Sales Office, or Customer Service Department.

MEDC Limited,

Colliery Road,
Pinxton, Nottingham
NG16 6JF, UK

T: +44 (0) 1773 864 100
F: +44 (0) 1773 582 800
www.cooperhac.com

Hernis Limited

P.O. Box 791 Stoa
NO-4809 Arendal
Norway

T: +47 37 06 37 00
F: +47 37 06 37 06
www.cooperhac.com

FHF Funke + Huster Fernsig GmbH

Gewerbeallee 15-19
45478 Mülheim
a.d.Ruhr, Germany

T: +49 208 82 68 0
F: +49 208 82 68 286
www.fhf.de

Hazardous Area Communications

Rua do Mercado,
17 – 9º. andar
Rio de Janeiro,
RJ, 20010-120
Brazil

T: +55 21 7956 4433

Hazardous Area Communications

3413 North Sam
Houston
Parkway West
Houston, TX 77086, USA

T: +1 (713) 937 9772
F: +1 (713) 937 9773

Hazardous Area Communications

13F. Vision Tower
707-2 Yeoksam-dong,
Gangnam-gu,
Seoul 135-080, Korea

T: +82 (2) 539 2203
F: +82 (10) 6569 09888

Hazardous Area Communications

No.2 Serangoon
North Avenue 5
#06-01. Fu Yu Building
Singapore 554911

T: (65) 8499 7087

Cooper Industries Middle East LLC

Dammam K.S.A
PLANT AT 2ND
Industrial City Dammam,
111, Jubail Street,
PO BOX: 70160,
Al Khobar, Pin:31952.
Kingdom of Saudi Arabia

T: +966 3 812 2970

Gitiessse Srl.

Via Al Ponte Polcevera 8/14
16161 Genova
Italy

T: +39 010 7416 801
F: +39 010 740 21 31
www.cooperhac.com

Eaton
1000 Eaton Boulevard
Cleveland, OH 44122
United States
Eaton.com

Eaton's Crouse-Hinds Business
1201 Wolf Street
Syracuse, NY 13208
(866) 764-5454
crouse.customerctr@cooperindustries.com

Eaton is a registered trademark.

All other trademarks are property
of their respective owners.

© 2013 Eaton Corporation
All Rights Reserved

Crouse-Hinds
by **EATON**